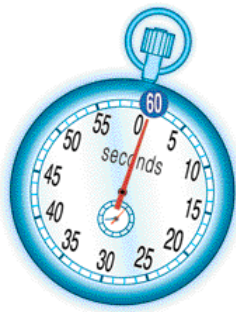


Perfect Timing. It's Our Business.



Testing Results

Certification: Leap Second Testing

Model Name: TimeGPS

Current Release:

All versions.

Leap Second tested product from Symmetricom provides Time of Year information across the boundary between December 31, 2005, and January 1, 2006. This includes, but is not limited to, handling of the Time information provided via integrated displays and output ports.

Symmetricom products that report time information will do so as described below.

Expected Leap Second Behavior: If time scale is configured to GPS, there is no leap second implication. If time scale is configured to UTC, the TOD is based on the behavior of the GPS engine. The leap second is inserted on midnight December 31 whereby the time of day will show a value of 60 in the seconds field. The GPS control segment notifies the GPS engine several weeks prior of the leap second insertion on December 31. No action required.

Resolution Plan: None required.

Symmetricom is not responsible for the correct processing of this information by any external program or device, only the transition from the year 2005 to the year 2006 as provided by integrated displays and output ports.

Symmetricom, Inc., is making every effort to provide accurate and up-to-date information on the Leap Second readiness of its products. This information reflects the current results of compliance tests of standard products and may be updated or changed without notice as testing continues. This information is published for your assistance only. An overall assessment and plan based on your particular needs is your responsibility. Symmetricom disclaims any implied warranties of merchantability and fitness for a particular purpose and makes no express warranties except as may be stated in its written agreement with its customers. In no event is Symmetricom liable to anyone for any indirect, special, or consequential damages. Liability is limited to the purchase price of the product.